



# NOAA EXTREME WEATHER INFORMATION SHEET 2008

## STATE INFORMATION

<http://ecowatch.ncddc.noaa.gov/c-side>

<b>Alabama Emergency Management Agency</b> ( <a href="http://ema.alabama.gov">ema.alabama.gov</a> )	205-280-2200
<b>Alabama Department of Transportation</b> ( <a href="http://www.dot.state.al.us">www.dot.state.al.us</a> )	334-242-6358
<b>Road Condition Information</b>	1-888-588-2848
<b>National Weather Service Forecast Office (Mobile/Pensacola)</b> ( <a href="http://www.srh.noaa.gov/mob">www.srh.noaa.gov/mob</a> )	251-633-6443
<b>Alabama Bureau of Tourism and Travel</b> ( <a href="http://www.touralabama.org">www.touralabama.org</a> )	334-242-4169 or 1-800-ALABAMA (252-2262)
<b>Alabama Highway Patrol</b> ( <a href="http://www.dps.state.al.us/HighwayPatrol">www.dps.state.al.us/HighwayPatrol</a> )	334-242-4128 (*hp from any cell phone)
<b>Alabama Department of Public Safety</b> ( <a href="http://www.dps.state.al.us">www.dps.state.al.us</a> )	334-242-4371
<b>Governor's Office</b> ( <a href="http://www.governor.state.al.us">www.governor.state.al.us</a> )	334-242-7100
<b>Alabama Attorney General</b> ( <a href="http://www.ago.state.al.us">www.ago.state.al.us</a> )	334-242-7300
<b>Alabama Department of Insurance</b> ( <a href="http://www.aldoi.gov">www.aldoi.gov</a> )	334-269-3550
<b>Alabama Department of Conservation and Natural Resources</b> ( <a href="http://www.outdooralabama.com">www.outdooralabama.com</a> )	334-242-3486
<b>Alabama Department of Environmental Management</b> ( <a href="http://www.adem.state.al.us">www.adem.state.al.us</a> )	334-271-7700
<b>US Coast Guard (8th District)</b>	251-441-6218
<b>Alabama Power Company</b> ( <a href="http://www.alabamapower.com">www.alabamapower.com</a> )	1-800-245-2244
	<b>Power Outages: 1-800-888-2726</b>
<b>Alabama Rural Electric Cooperatives</b> ( <a href="http://www.areapower.com">www.areapower.com</a> )	1-800-410-2732
<b>Dothan Electric</b> ( <a href="http://www.dothan.org/depts/dothanutilities/utilitieselectric.htm">www.dothan.org/depts/dothanutilities/utilitieselectric.htm</a> )	334-615-3360 or 334-615-3302

**FOR EMERGENCIES, CALL 911 IN ALL AREAS • FOR NON-EMERGENCY INFORMATION AND REFERRALS, CALL 211**

## COUNTY INFORMATION

### MOBILE COUNTY

Emergency Management	251-460-8000
	<a href="http://www.mcema.net">www.mcema.net</a>
Sheriff	251-574-8633
Mobile Police	251-208-7211
Mobile Fire	251-208-7311
Chickasaw Police	251-452-0571
Chickasaw Fire	251-452-0574
Citronelle Police	251-866-5527
Saraland Police	251-675-5331
Saraland Fire	251-679-5506
Satsuma Police & Fire	251-675-0151
Bayou La Batre Police	251-824-2757
Bayou La Batre Fire	251-824-9286
Dauphin Island Police	251-861-5523
Prichard Police & Fire	251-452-2211

### BALDWIN COUNTY

Emergency Management	251-972-6807
	<a href="http://www.co.baldwin.al.us/PageView.asp?">www.co.baldwin.al.us/PageView.asp?</a>
Sheriff	251-937-0202
Gulf Shores Police	251-968-2431
Gulf Shores Fire	251-947-3911
Orange Beach Police	251-981-9777
Orange Beach Fire	251-981-5262
Bay Minette Police	251-580-2559
Bay Minette Fire	251-580-1617
Daphne Police	251-621-9100
Daphne Fire	251-621-2836
Fairhope Police & Fire	251-928-2385
Foley Police	251-943-4431
Foley Fire	251-943-1266
Spanish Fort Fire	251-626-8876

### HOUSTON COUNTY

Emergency Management	334-794-9720
	<a href="http://www.houstoncounty.org/Emergency_Management/Emergency_Management.htm">www.houstoncounty.org/Emergency_Management/Emergency_Management.htm</a>
Sheriff	334-677-4808
Dothan Police & Fire	334-615-4911
Ashford Police & Fire	334-899-5113
Cottonwood Police	334-691-2113

### ESCAMBIA COUNTY

Emergency Management	251-867-0232
	<a href="http://www.co.escambia.al.us/ema.htm">www.co.escambia.al.us/ema.htm</a>
Sheriff	251-867-0304
Atmore Police	251-368-9141
Atmore Fire	251-368-9155
Brewton Police	251-867-3212
Brewton Fire	251-809-1720
East Brewton Police	251-867-4864
East Brewton Fire	251-867-4858
Flomaton Police & Fire	251-296-5811

### COVINGTON COUNTY

Emergency Management	334-427-4911
Sheriff	334-428-2640
Andalusia Police	334-222-1155
Andalusia Fire	334-222-1121
Floralda Police	334-858-3244
Opp Police	334-493-4511
Opp Fire	334-493-7015

### GENEVA COUNTY

Emergency Management	334-684-5677
	<a href="http://www.genevacounty.org/ema">www.genevacounty.org/ema</a>
Sheriff	334-684-6947
Geneva Police & Fire	334-684-2777
Samson Police & Fire	334-898-7118
Slocomb Police & Fire	334-886-3333

**For additional resources, updates, and real-time data see our website:**  
<http://ecowatch.ncddc.noaa.gov/c-side>

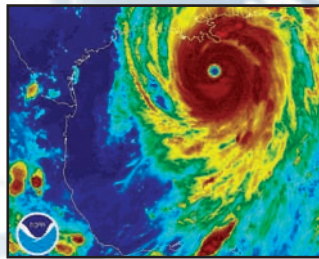


The site provides direct linkage to local, state, and federal information as it pertains to severe weather preparation and monitoring across the Gulf of Mexico coastal region.

## NATIONAL INFORMATION

**American Red Cross** ..... 1-866-GET-INFO (1-866-438-4636)  
 ..... www.redcross.org  
**Environmental Protection Agency** ..... www.epa.gov  
**Federal Emergency Management Agency (FEMA)** 1-800-621-FEMA (3362)  
 ..... www.fema.gov  
**National Oceanic and Atmospheric Administration (NOAA)**  
 ..... www.noaa.gov  
**NOAA National Coastal Data Development Center** . . . . . www.ncddc.noaa.gov  
**NOAA National Climatic Data Center** ..... www.ncdc.noaa.gov  
**NOAA National Data Buoy Center** ..... www.ndbc.noaa.gov  
**NOAA National Hurricane Center** ..... www.nhc.noaa.gov  
**NOAA National Oceanographic Data Center** . . . . . www.nodc.noaa.gov  
**NOAA National Weather Service** ..... www.nws.noaa.gov  
**NOAA Coastal Services Center** . . . . . www.csc.noaa.gov  
**NOAA National Environmental Satellite, Data, and Information**  
 ..... www.nesdis.noaa.gov  
**NOAA Watch - NOAA's All-Hazard Monitor** . . . . . www.noaawatch.gov  
**US Department of Homeland Security** . . . . . www.dhs.gov  
**U.S. Department of Commerce** ..... www.commerce.gov  
**National Aeronautics and Space Administration (NASA)** . . www.nasa.gov  
**EPA Gulf of Mexico Program** ..... www.epa.gov/gmpo  
**Commander Naval Meteorology and Oceanography Command**  
 ..... www.oceanographer.navy.mil/cnmoc.htm

**NOAA Satellites and Information Service (National Environmental Satellite, Data and Information Service) - NESDIS** operates the satellites and manages the processing and distribution of millions of bits of data and images these satellites produce daily. The prime customer for the satellite data is the NOAA National Weather Service, which uses satellite data to create forecasts for television, radio, and weather advisory services.



## RADIO STATIONS

### Alabama:

WABB 97.5 FM (Mobile)	WMXC 99.9 FM (Mobile)
WCSN 105.7 FM (Orange Beach)	WOOF 99.7 FM (Dothan)
WAAO 103.7 FM (Andalusia)	WKMV 106.7 FM (Enterprise)
WDJR 96.9 FM (Dothan)	WNTM 710 AM (Mobile)

### Mississippi:

MS Public Broadcasting 88.1- 91.3 FM	WKNN 99.1 FM (Pascagoula)
WZKX 107.9 FM (Gulfport)	WXRR 104.5 (Hattiesburg)
WBUV 104.9 FM (Biloxi)	WJZD 94.5 FM (Gulfport)
WRJW 1320 AM (Picayune)	WQRZ 103.5 FM (Kiln)

### Louisiana:

WWL 870 AM (New Orleans)	WFMF 102.5 FM (Baton Rouge)
WLMG 101.9 FM (New Orleans)	WJBO 1150 AM (Baton Rouge)
KHLA 99.5 FM (Lake Charles)	KTDY 99.9 FM (Lafayette)

## NOAA Weather Radio

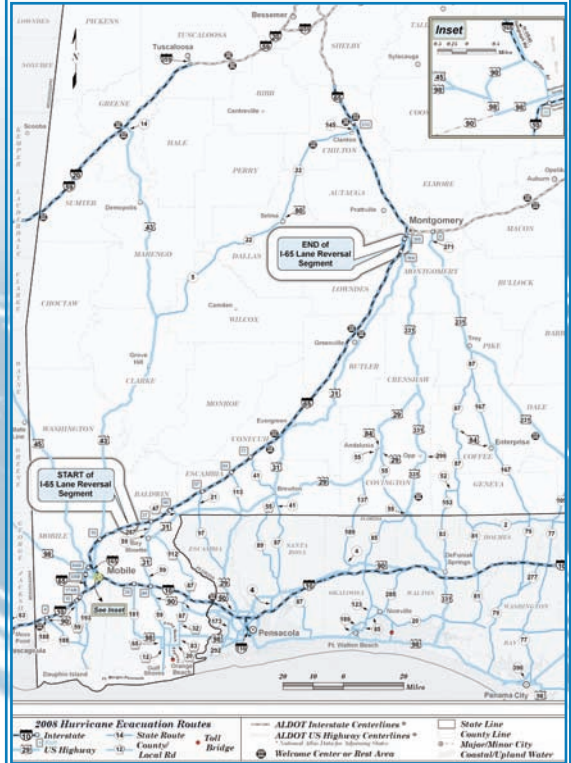
*Not manufactured by NOAA, NWR receivers can be purchased at many retail outlets and on the Internet*

NOAA Weather Radio (NWR) All Hazards is a nationwide network of radio stations broadcasting continuous weather information directly from a nearby National Weather Service office. NWR broadcasts National Weather Service warnings, watches, forecasts, and other hazard information 24 hours a day.

162.400 MHz	162.425 MHz	162.450 MHz	162.475 MHz	162.500 MHz	162.525 MHz	162.550 MHz
-------------	-------------	-------------	-------------	-------------	-------------	-------------

## REVERSE-LANING FOR HURRICANE EVACUATION

### Reverse-Laning Plan Map



### Plan for Reverse-Laning For Hurricane Evacuation

Certain strategic routes have been historically identified as hurricane evacuation routes. These hurricane routes are “signed on the ground” as such and have been presented to the public in various manners for their knowledge and use. This hurricane evacuation route network begins with state and county routes in coastal areas that then feed into US and Interstate routes. These existing hurricane evacuation routes serve as the base for the “Reverse-Laning” plan.

*For additional information go to:*

[www.dot.state.al.us/Docs/Bureaus/Public+Affairs/Administrative/Hurricane+Updates](http://www.dot.state.al.us/Docs/Bureaus/Public+Affairs/Administrative/Hurricane+Updates)

## Participants



Prepared by NCDDC 1-866-732-2382  
 Email: NCDDC@NOAA.GOV

Version 1.06

Published June 2008