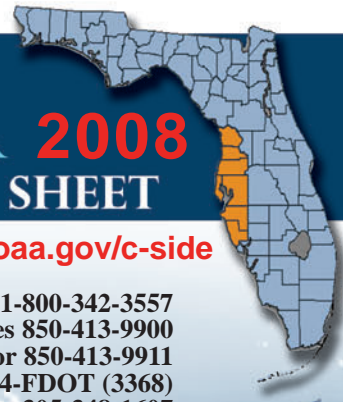




NOAA EXTREME WEATHER 2008 INFORMATION SHEET



STATE INFORMATION

<http://ecowatch.ncddc.noaa.gov/c-side>

Florida Emergency Information Line (Only activated during disasters)	1-800-342-3557
Florida Division of Emergency Management (www.FloridaDisaster.org)	Non-Emergencies 850-413-9900 Emergencies Only 1-800-320-0519 or 850-413-9911
Florida Department of Transportation (www.dot.state.fl.us)	1-866-374-FDOT (3368)
International Hurricane Research Center (www.ihc.fiu.edu)	305-348-1607
Florida Department of Health (www.doh.state.fl.us)	850-245-4321
Florida Office of Insurance Regulation (www.flair.com)	850-413-3140
Florida Office of Tourism (www.visitflorida.com)	1-888-735-2872
Florida Dept of Law Enforcement (www.fdle.state.fl.us)	850-410-7000
Florida Highway Patrol (www.flhsmv.gov/fhp)	*FHP from any cell phone
Florida Department of Agriculture (www.doacs.state.fl.us)	850-488-3022
Division of Animal Industry Emergency Links	www.doacs.state.fl.us/ai/adc/adc_emerg_manag_links.shtml
Governor's Office (www.flgov.com)	850-488-4441 or 850-488-7146
Department of Elder Affairs (http://elderaffairs.state.fl.us)	1-800-96ELDER (963-5337)
Florida Attorney General (myfloridalegal.com)	850-414-3300
Florida Department of Environmental Protection (www.dep.state.fl.us)	850-245-2118
Florida Wildlife and Fisheries Conservation Commission (www.myfwc.com)	850-488-4676
Florida Department of Veterans Affairs (www.floridavets.org)	727-319-7400
National Weather Service (Tampa Bay, FL Office) (www.srh.noaa.gov/tbw)	813-645-2506
US Coast Guard (7th District)	1-800-874-7561
Ocala Electric Utility (www.ocalaelectric.com)	Power Outage 352-351-6666
Florida Power & Light Company (www.fpl.com)	Power Outage 1-800-4-OUTAGE (468-8243)
Peace River Electric Cooperative (www.preco.org)	1-800-282-3824
Tampa Electric Company (TECO) (www.tampaelectric.com)	Power Outage 1-877-588-1010
Progress Energy (www.progress-energy.com)	Power Outage 1-800-228-8485
Sumter Electric Cooperative (SECO) (www.secoenergy.com)	1-800-SECO-141 (732-6141)
Clay Electric Cooperative (clayelectric.com)	1-888-434-9844
Withlacoochee River Electric Cooperative (www.wrec.net)	352-567-5133

COUNTY INFORMATION

Citrus	
Emergency Management	352-746-6555
Citizen's Information Line	352-746-5470 or 352-527-2106
Sheriff	352-726-1121
Citrus County Fire	352-527-5406
Pinellas	
Emergency Management	727-464-3800
Citizen Information Center (Open only during emergencies)	727-464-4333
Sheriff	727-582-6200
Pinellas Suncoast Fire & Rescue	727-595-1117
Belleair Police	727-588-3787
Belleair Bluffs Fire	727-584-8392
Clearwater Police	727-562-4242 Fire 727-562-4334
Dunedin Fire	727-298-3102
Gulfport Police	727-893-1030 Fire 727-893-1062
Kenneth City Police	727-544-2564
Largo Police	727-587-6730 Fire 727-587-6714
Madeira Beach Fire	727-391-3400
Oldsmar Fire	813-749-1200
Pinellas Park Fire	727-298-2681
Safety Harbor Fire	727-724-1520
St. Pete Beach Police	727-363-9200 Fire 727-363-9206
St. Petersburg Police	727-893-7780 Fire 727-893-7694
Seminole Fire	727-393-8711
South Pasadena Fire	727-344-1666
Tarpon Springs Police	727-938-2849 Fire 727-938-3737
Treasure Island Police	727-547-4595 Fire 727-547-4590
Pasco	
Emergency Management	727-847-8137
Resident Information Center	727-847-8959
Sheriff	1-800-854-2862
Pasco County Fire	727-847-8102
Dade City Police	352-521-1493
New Port Richey Police	727-841-4550 Fire 727-841-4550
Port Richey Police	727-816-1919 Fire 727-816-1919
Zephyrhills Police	813-780-0050 Fire 813-780-0041
Hernando	
Emergency Management	352-754-4083
Public Information Line	352-754-4111
Sheriff	352-754-6830
Brooksville Police	352-754-6800 Fire 352-544-5445
Manatee	
Emergency Management	941-749-3500
Emergency Information Line	941-748-4501
Sheriff	941-747-3011
West Manatee Fire	941-741-3900
Southern Manatee Fire	941-748-2246
Bradenton Police	941-932-9300 Fire 941-708-6233
Bradenton Beach Police	941-778-6311
Holmes Beach Police	941-708-5804
Longboat Key Police	941-316-1977 Fire 941-316-1944
Palmetto Police	941-723-4587
North River Fire	941-721-6700
Hillsborough	
Emergency Management	813-236-3800
Information Hotline	813-272-5900
Sheriff	813-247-8200
Hillsborough Fire	813-272-6600
Plant City Police	813-757-9200 Fire 813-757-9131
Tampa Police	813-276-3200 Fire 813-274-7011
Temple Terrace Police	813-989-7110 Fire 813-989-7121
Sarasota	
Emergency Management	941-861-5495
Sarasota County Call Center	941-861-5000
Sheriff	941-861-5800
North Port Police	941-429-7300 Fire 941-240-8150
Sarasota Police	941-316-1201
Sarasota Fire	941-861-5000
Venice Police	941-486-2444 Fire 941-480-3030

FOR EMERGENCIES, CALL 911 IN ALL AREAS
FOR NON-EMERGENCY INFORMATION AND REFERRALS, CALL 211

FLORIDA central west

NATIONAL INFORMATION

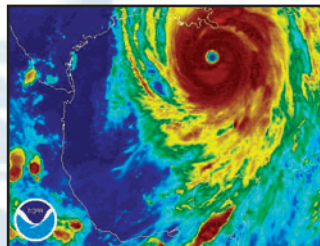
American Red Cross	1-866-GET-INFO (1-866-438-4636)	www.redcross.org
Environmental Protection Agency		www.epa.gov
Federal Emergency Management Agency (FEMA)	1-800-621-FEMA (3362)	www.fema.gov
National Climatic Data Center		www.ncdc.noaa.gov
National Data Buoy Center		www.ndbc.noaa.gov
National Hurricane Center		www.nhc.noaa.gov
National Oceanic and Atmospheric Administration (NOAA)		www.noaa.gov
National Oceanographic Data Center		www.nodc.noaa.gov
National Weather Service		www.nws.noaa.gov
National Coastal Data Development Center		www.ncddc.noaa.gov
NOAA Coastal Services Center		www.csc.noaa.gov
NOAA/National Environmental Satellite, Data, and Information		www.nesdis.noaa.gov
NOAAWatch - NOAA's All-Hazard Monitor		www.noaawatch.gov
US Department of Homeland Security		www.dhs.gov/dhspublic
U.S. Department of Commerce		www.commerce.gov
National Aeronautics and Space Administration (NASA)		www.nasa.gov
EPA Gulf of Mexico Program		www.epa.gov/gmpo
Commander Naval Meteorology and Oceanography Command		www.oceanographer.navy.mil/cnmoc.htm

For additional resources, updates, and real-time data see our website: <http://ecowatch.ncddc.noaa.gov/c-side>



The site provides direct linkage to local, state, and federal information as it pertains to severe weather preparation and monitoring across the Gulf of Mexico coastal region.

NOAA Satellites and Information Service (National Environmental Satellite, Data and Information Service) - NESDIS operates the satellites and manages the processing and distribution of millions of bits of data and images these satellites produce daily. The prime customer for the satellite data is the NOAA National Weather Service, which uses satellite data to create forecasts for television, radio, and weather advisory services.



RADIO STATIONS

WRUF 103.7 FM/850 AM (Gainesville)	WMTX 100.7 FM (Tampa)
WOGK 93.7 FM (Ocala)	WWRM 94.9 FM (Tampa)
WTNT 94.9 FM (Tallahassee)	WSGL 103.1 FM (Naples)
WFSU 88.9 FM (Tallahassee)	WEOW 92.7 FM (Key West)
WGCU 90.1 FM (Fort Meyers)	WFKZ 103.1 FM (Tavernier)
WIKX 92.9 FM (Port Charlotte)	WFFG 1300 AM (Marathon)
WWUS 104.1 FM (Big Pine Key)	

NOAA Weather Radio

Not manufactured by NOAA, NWR receivers can be purchased at many retail outlets and on the internet

NOAA Weather Radio (NWR) All Hazards is a nationwide network of radio stations broadcasting continuous weather information directly from a nearby National Weather Service office. NWR broadcasts National Weather Service warnings, watches, forecasts, and other hazard information 24 hours a day.

162.400 MHz	162.425 MHz	162.450 MHz	162.475 MHz	162.500 MHz	162.525 MHz	162.550 MHz
-------------	-------------	-------------	-------------	-------------	-------------	-------------



A Personalized Travel Information Service

My Florida **511** is a free service of the Florida Department of Transportation. Travelers can dial **511** to access current information for specific routes and roadway segments, including:

- anticipated travel delays
- traffic accidents
- roadway blockages and lane closures.

When callers dial **511**, the service automatically connects to the most local **511** service available from the current location. However, you can transfer to other Florida area **511** services from any Florida location.

Through Florida **511**, callers will be able to receive information on all interstate roads across the state, including:

I-4, I-10, I-75, I-95, I-110, I-175, I-195, I-275, I-295, I-375, I-395, I-595, and Florida's Turnpike.

Callers can also transfer to a local **511** service for more detailed information and more road choices.

The My Florida **511** Website incorporates motion images from traffic cameras, e-mail alerts, public transportation information and customer feedback.

For more information, visit the My Florida Website at www.fl511.com

Florida Department of Transportation www.dot.state.fl.us

Participants



Prepared by NCDCC 1-866-732-2382
Email: NCDCC@NOAA.GOV

Version 1.01

Published March 2008