



# NOAA EXTREME WEATHER INFORMATION SHEET 2008

<http://ecowatch.ncddc.noaa.gov/c-side>

## STATE INFORMATION

TexasOnline.com Emergency Portal	www.TexasOnline.com/emergency/eng
Texas Department of Public Safety (www.txdps.state.tx.us)	512-424-2000
Governor's Division of Emergency Management (www.txdps.state.tx.us/dem/pages/index.htm)	512-424-2138
Texas Department of Transportation (www.dot.state.tx.us)	1-800-558-9368
Texas State Road Conditions	1-800-452-9292
National Weather Service (Houston/Galveston) (www.srh.noaa.gov/hgx)	281-337-5074
National Weather Service (Brownsville) (www.srh.noaa.gov/bro)	956-504-1432
National Weather Service (Corpus Christi) (www.srh.noaa.gov/crp)	361-289-0959
Office of Tourism Information & Referral (www.traveltex.com)	1-800-888-8TEX (8839)
Texas Department of Agriculture (www.agr.state.tx.us)	1-800-TELL-TDA (835-5832)
Texas Highway Patrol (www.txdps.state.tx.us/tle)	512-424-2000
Texas Highway Patrol Roadside Assistance	1-800-525-5555
Texas Rangers (www.txdps.state.tx.us/director_staff/texas_rangers)	512-424-2160
Governor's Office (www.governor.state.tx.us)	1-800-843-5789 or 512-463-2000
Texas Animal Health Commission (www.tahc.state.tx.us)	1-800-550-8242
Texas Attorney General (www.oag.state.tx.us)	1-800-252-8011 or 512-463-2100
Consumer Protection Hotline	1-800-621-0508
Texas Commission on Environmental Quality (www.tceq.state.tx.us)	512-239-1000
Texas Department of Insurance (www.tdi.state.tx.us)	1-800-578-4677 or 512-463-6169
Texas Parks & Wildlife Department(www.tpwd.state.tx.us)	1-800-792-1112
Texas Department of State Health Services (www.dshs.state.tx.us)	512-458-7111 or 1-888-963-7111
Brownsville Public Utilities Board (www.brownsville-pub.com)	956-983-6300
CenterPoint Energy Houston Electric (www.centerpointenergy.com)	1-800-752-8036
CenterPoint Energy East/South Texas (www.centerpointenergy.com)	1-888-876-5786
Entergy (www.entropy-texas.com)	Customer Service and Emergencies 1-800-ENTERGY (368-3749) Power Outage 1-800-9OUTAGE (968-8243)
Houston County Electric Cooperative (http://houstoncountyelec.com)	Customer Service 1-800-657-2445 Power Outage 1-800-970-HCEC (4232)
Nueces Electric Cooperative (www.nueceselectric.org)	1-800-NEC-WATT (632-9288)
San Patricio Electric Cooperative (www.sanpatricioelectric.org)	361-364-2220 or 1-888-740-2220
AEP - American Electric Power (www.aep.com)	1-877-373-4858
US Coast Guard (8th District)	713-671-5100

**For Emergencies, Call 911 In All Areas • For Non-Emergency Information And Referrals, Call 211  
For Evacuations And Special Health Care Needs, Call 211 To Register In Advance For A Ride**

## COUNTY INFORMATION

<b>Aransas County</b>		<b>Jefferson County</b>	
Emergency Management	361-729-2222	Emergency Management	409-835-8757
Sheriff Department	361-729-2222		www.co.jefferson.tx.us/em/em.htm
	www.aransascountysheriff.com	Sheriff Department	409-835-8631
<b>Brazoria County</b>		<b>Kenedy County</b>	
Emergency Management	979-864-1801	Emergency Management	361-294-5205
	www.brazoria-county.com/em	Sheriff Department	361-294-5205
Sheriff Department	979-388-2392	<b>Kleberg County</b>	
<b>Calhoun County</b>		Emergency Management	361-595-8500
Emergency Management	361-553-4400	Sheriff Department	361-595-8500
Sheriff Department	361-553-4646	<b>Matagorda County</b>	
<b>Cameron County</b>		Emergency Management	979-323-0707
Emergency Management	956-547-7000		www.co.matagorda.tx.us/ips/cms/Emergency_Preparedness
	www.co.cameron.tx.us/emergency/emergencymanage.html	Sheriff Department	979-245-5526
Sheriff Department	956-554-6700	<b>Nueces County</b>	
<b>Chambers County</b>		Emergency Management	361-888-0513
Emergency Management	409-267-8343	Sheriff Department	361-826-2900
	www.co.chambers.tx.us/offices/emermgmt.html	<b>Orange County</b>	
Sheriff Department	409-267-8318	Emergency Management	409-882-7895
<b>Galveston County</b>			www.co.orange.tx.us/OCEmergManagement.htm
Emergency Management	1-888-384-2000	Sheriff Department	409-883-2612
	www.gcoem.org	<b>San Patricio County</b>	
Sheriff	409-766-2322 or 281-534-3515	Emergency Management	361-364-9650
<b>Harris County</b>		Sheriff Department	361-364-2251
Emergency Management	713-881-3100	<b>Willacy County</b>	
	www.hcoem.org	Emergency Management	956-689-5456
Sheriff Department	713-221-6000	Sheriff Department	956-689-5576

For additional resources, updates, and real-time data see our website: <http://ecowatch.ncddc.noaa.gov/c-side>

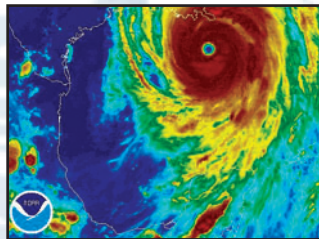


The site provides direct linkage to local, state, and federal information as it pertains to severe weather preparation and monitoring across the Gulf of Mexico coastal region.

## NATIONAL INFORMATION

- American Red Cross** ..... 1-866-GET-INFO (1-866-438-4636)  
..... [www.redcross.org](http://www.redcross.org)
- Environmental Protection Agency** ..... [www.epa.gov](http://www.epa.gov)
- Federal Emergency Management Agency (FEMA)** 1-800-621-FEMA (3362)  
..... [www.fema.gov](http://www.fema.gov)
- National Oceanic and Atmospheric Administration (NOAA)**  
..... [www.noaa.gov](http://www.noaa.gov)
- NOAA National Coastal Data Development Center** .. [www.ncddc.noaa.gov](http://www.ncddc.noaa.gov)
- NOAA National Climatic Data Center**..... [www.ncdc.noaa.gov](http://www.ncdc.noaa.gov)
- NOAA National Data Buoy Center** ..... [www.ndbc.noaa.gov](http://www.ndbc.noaa.gov)
- NOAA National Hurricane Center** ..... [www.nhc.noaa.gov](http://www.nhc.noaa.gov)
- NOAA National Oceanographic Data Center**..... [www.nodc.noaa.gov](http://www.nodc.noaa.gov)
- NOAA National Weather Service**..... [www.nws.noaa.gov](http://www.nws.noaa.gov)
- NOAA Coastal Services Center**..... [www.csc.noaa.gov](http://www.csc.noaa.gov)
- NOAA National Environmental Satellite, Data, and Information**  
..... [www.nesdis.noaa.gov](http://www.nesdis.noaa.gov)
- NOAAWatch - NOAA's All-Hazard Monitor**..... [www.noaawatch.gov](http://www.noaawatch.gov)
- US Department of Homeland Security**..... [www.dhs.gov](http://www.dhs.gov)
- U.S. Department of Commerce** ..... [www.commerce.gov](http://www.commerce.gov)
- National Aeronautics and Space Administration (NASA)** [www.nasa.gov](http://www.nasa.gov)
- EPA Gulf of Mexico Program** ..... [www.epa.gov/gmpo](http://www.epa.gov/gmpo)
- Commander Naval Meteorology and Oceanography Command**  
..... [www.oceanographer.navy.mil/cnmoc.htm](http://www.oceanographer.navy.mil/cnmoc.htm)

**NOAA Satellites and Information Service (National Environmental Satellite, Data and Information Service) - NESDIS** operates the satellites and manages the processing and distribution of millions of bits of data and images these satellites produce daily. The prime customer for the satellite data is the NOAA National Weather Service, which uses satellite data to create forecasts for television, radio, and weather advisory services.



## RADIO STATIONS

- Texas:**
- |                                 |                                |
|---------------------------------|--------------------------------|
| KTRH 740 AM (Houston)           | KZFM 95.5 FM (Corpus Christi)  |
| KLAT 1010 AM Española (Houston) | KNCN 101.3 FM (Corpus Christi) |
| KUHF 88.7 FM (Houston)          | KQXY 94.1 FM (Beaumont)        |
| KOGT 1600 AM (Orange)           | KLVI 560 AM (Beaumont)         |
- Louisiana:**
- |                             |                             |
|-----------------------------|-----------------------------|
| WWL 870 AM (New Orleans)    | WFMF 102.5 FM (Baton Rouge) |
| WLMG 101.9 FM (New Orleans) | WJBO 1150 AM (Baton Rouge)  |
| KHLA 99.5 FM (Lake Charles) | KTDY 99.9 FM (Lafayette)    |

## NOAA Weather Radio

*Not manufactured by NOAA, NWR receivers can be purchased at many retail outlets and on the internet*

NOAA Weather Radio (NWR) All Hazards is a nationwide network of radio stations broadcasting continuous weather information directly from a nearby National Weather Service office. NWR broadcasts National Weather Service warnings, watches, forecasts, and other hazard information 24 hours a day.

- |                |                |                |                |                |                |                |
|----------------|----------------|----------------|----------------|----------------|----------------|----------------|
| 162.400<br>MHz | 162.425<br>MHz | 162.450<br>MHz | 162.475<br>MHz | 162.500<br>MHz | 162.525<br>MHz | 162.550<br>MHz |
|----------------|----------------|----------------|----------------|----------------|----------------|----------------|

## Evacuations and Special Health Care Needs:

**Dial 2-1-1 to register for a ride**

If you live in a hurricane EVACUATION ZONE, and you have special health care or transportation needs, you need to make extra efforts to get ready for hurricane season. Hurricane season officially begins June 1 and continues through November 30.

It is critical that you begin now to make your evacuation plans, prepare an emergency kit and learn evacuation routes. This should be done well in advance.

To find out whether you are living in an evacuation zone, dial 2-1-1 for information. Operators answering the phones at 2-1-1 are also prepared to help you register for transportation and special assistance now, before hurricane season begins.

**If you have special health care needs, register by dialing 2-1-1:**

Gulf coast residents with special health care needs (including those who are disabled or medically fragile) who live in evacuation zones and do not have friends or family to help in an evacuation should register for a ride in advance by dialing 2-1-1. The 2-1-1 registry must be dialed IN ADVANCE. Do not wait until a storm is in the Gulf to register for assistance. This service is for people who cannot drive themselves or make transportation arrangements.

**If you need transportation, register with 2-1-1:**

If you do not have a car or other vehicle, and you cannot get a ride with friends, neighbors or family, register IN ADVANCE for a ride by dialing 2-1-1.

**Governor's Division of Emergency Management**

[www.txdps.state.tx.us/dem/pages/index.htm](http://www.txdps.state.tx.us/dem/pages/index.htm)

## Participants



Prepared by NCDDC 1-866-732-2382  
Email: [NCDDC@NOAA.GOV](mailto:NCDDC@NOAA.GOV)

Version 1.02

Published March 2008